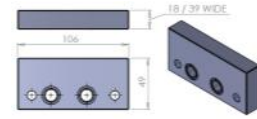


Stacking Plates

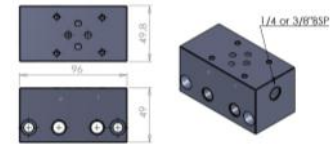
For any additional valve stacking plates, use "C" in part code

Cetop03 (NG6) Directional Control Valve Plates

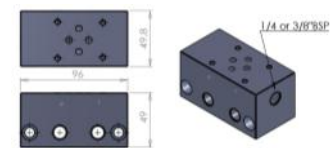
Description	Part Number
Spacer plate 18mm	HP050040-1
Spacer plate 39mm	HP050040-2



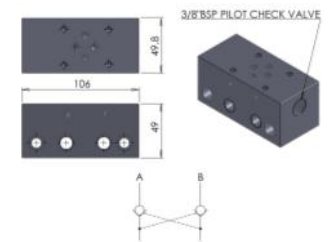
Parallel connection Cetop03 with 1/4" BSP ports	HP050015
Parallel connection Cetop03 with 3/8" BSP ports	HP050016



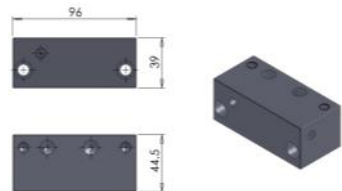
Series connection Cetop03 with 1/4" BSP ports	HP050128
---	----------



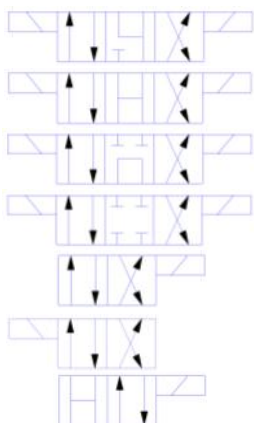
Pilot Check Valve on A&B with 3/8" BSP ports	HP150014-AB
Pilot Check Valve on A only with 3/8" BSP ports	HP150014-A
Pilot Check Valve on B only with 3/8" BSP ports	HP150014-B



Vertical to Horizontal Conversion block	HP050129
---	----------



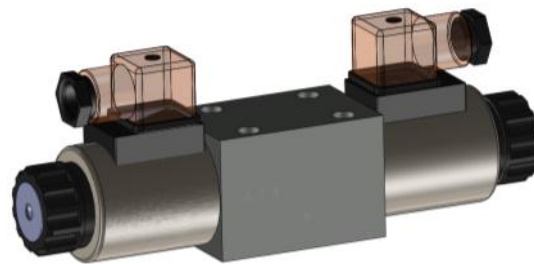
Valve diagram



Code

- 4WE6J60
- 4WE6H60
- 4WE6G60
- 4WE6E60
- 4WE6C60
- 4WE6Y60
- 4WEHB60

C3 Valves



Voltages available 12VDC, 24VDC, 24VAC, 110VAC, 220VAC
Push and Twist Manual Overrides also available

Working pressure (Max)	Flow (Max)
315bar	40l/min

