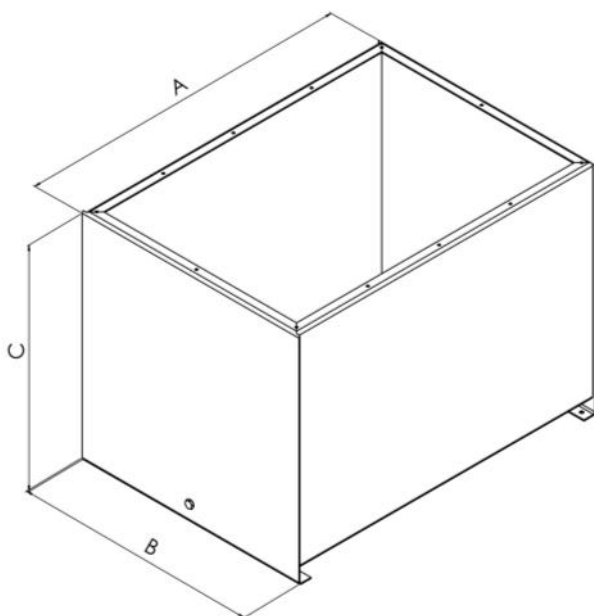


### Steel Oil Tank

#### Rectangular

Description	A	B	C	Type
12 Litre	335	270	290	12C
16 Litre	410	325	305	16C
30 Litre	470	375	335	30C
55 Litre	600	470	365	55C

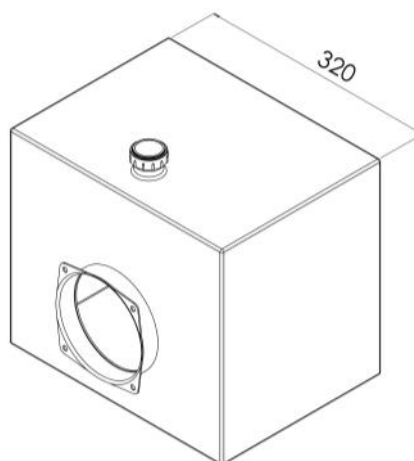
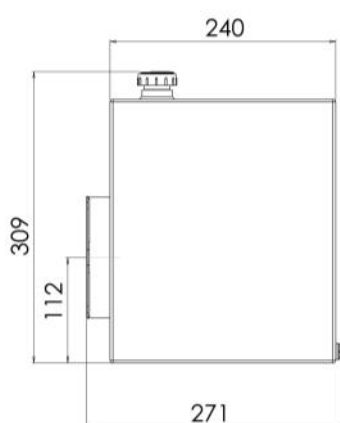


*Powerpacks are fitted to the lid of these tanks.  
For details on the position and orientation  
please contact our sales team.*

*These tanks are finished in zinc rich primer as  
standard.*

18 Litre Steel

18S



HPM

TD4

33W

H

S

C

N

05P

C

4567