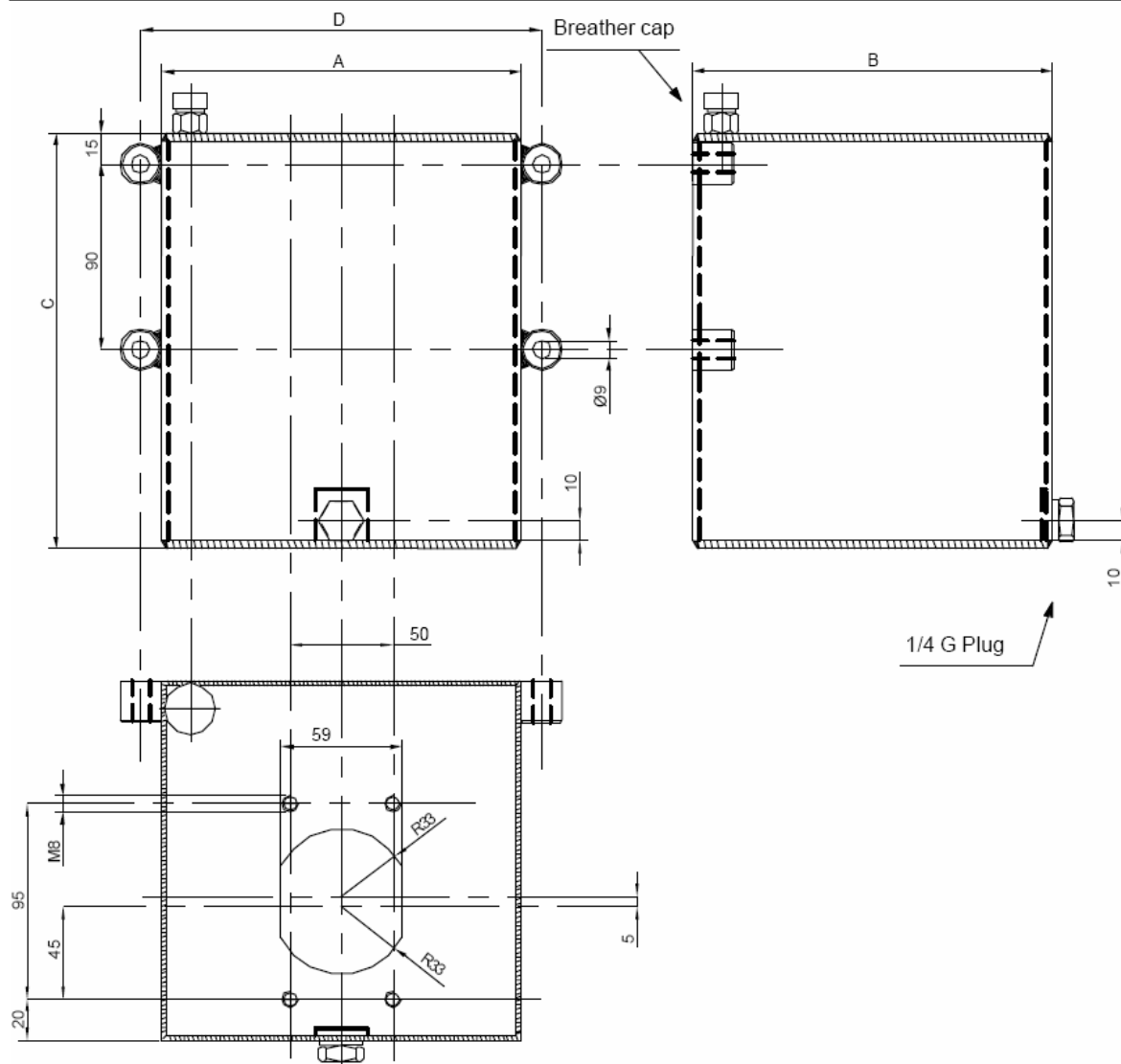


Hand Pump Tanks



Type	Capacity Litres	A	B	C	D	Weight kg
RP 408.01	1	100	150	120	120	2
RP 408.02	2			185		3
RP 408.03	3			255		3.7
RP 408.05	5	175	175	200	195	5.3
RP 408.07	7			275		6.6
RP 408.10	10			380		8.3

Description

This series of Hand Tanks are suitable for Hand Pumps HPMR and HPMU. Constructed from 3mm Steel these tanks are very robust and can be bulkhead mounted using 4 off M8 bolts. Pre-drilled to accept the HPM hand pumps. Finished in black powder coating. Complete with a Filler, drain plug and suction tube in capacities up to 10 litres as standard.